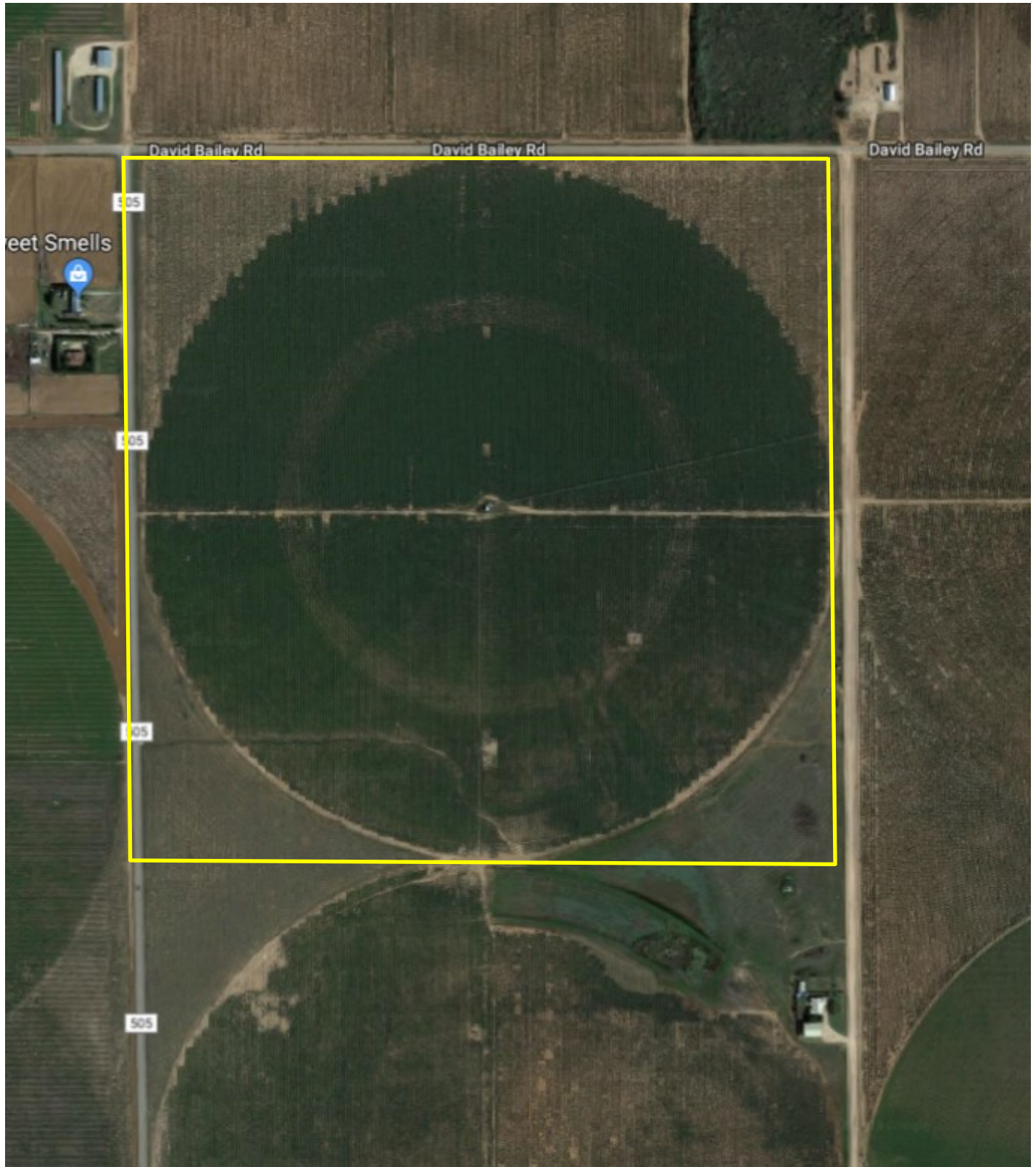


## Available—160 Acers of Prime Land for a Vineyard



### Contact Information:

Doug Melcher  
Office: 806-637-4569  
Cell: 806—638-2304  
doug@terrycountytractor.com

### Property Information:

Block T, SEC 85 NW 1/4 160 acers just outside city limits, 4 wells pumping at 450 gal total, 80 acres in 40" drip tape (North 80), T&L 1/4 mile pivot, Sandy Loam Soil Type